



WRC Company Profile



Western Rollout Contracting Est

مؤسسة تمديدات الغربيه للمقاولات



Table of Contents

1

Introduction

4

Major ISP Project

2

Area of interest

5

List of Machinery
and Equipment's

3

Major OSP Projects

6

Documentations



INTRODUCTION

GENERAL CONTRACTING IN TELECOMMUNICATION

Western Rollout Contracting Ext. is evolving to be one of the pioneers in the Telecommunications construction and construction industry in the Saudi Arabia.

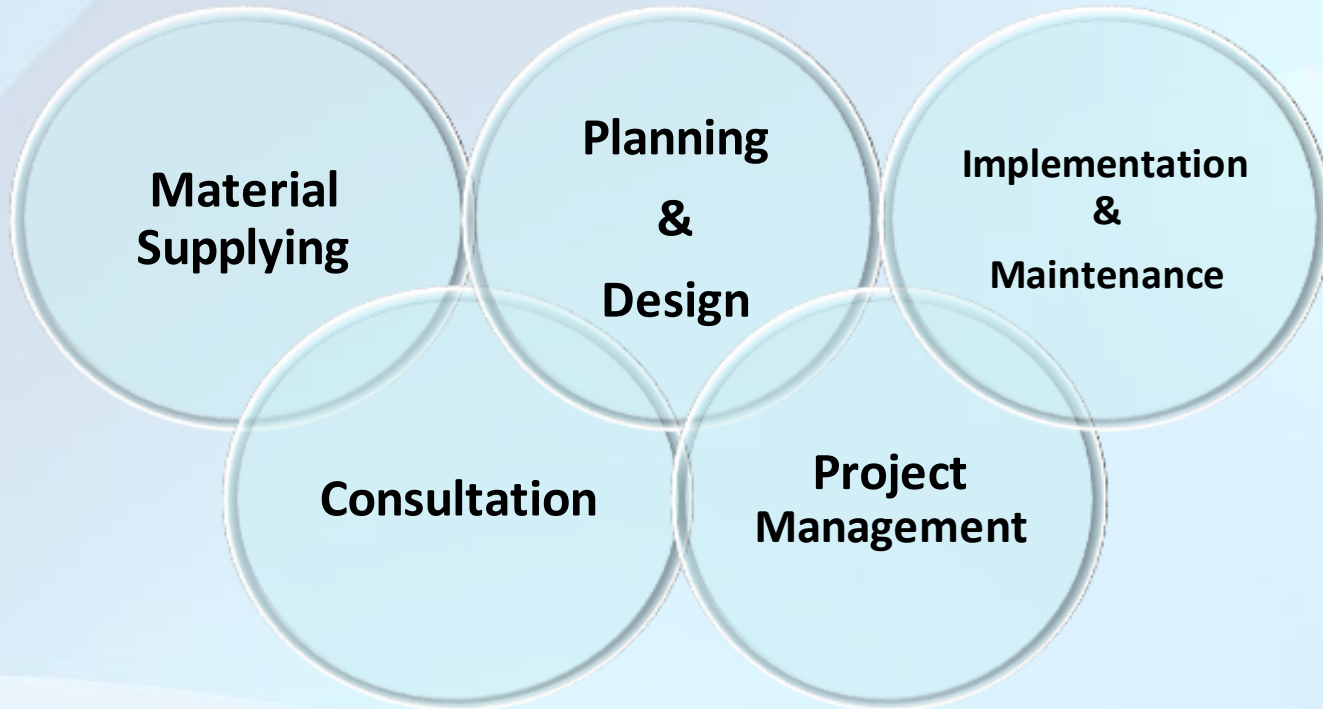
The company began construction work in 2013. Since then it has made substantial advances in the contracting market and have successfully completed several major Infrastructure and facilities projects. During the period, the company has gained experience and expertise allowing us to accept any challenging project, no matter how sophisticated or critical. It is this kind of positive performance which has resulted in the expansion of the Company's activities in Saudi Arabia. WRC believes in a single point contact to the Client, which enables in settling key issues promptly.

WRC work crew and work shift philosophy is flexible enough to accommodate the fast track nature of projects and its influence on productivity of personnel & resources. It will also be suitably changed to suit the Materials availability & requirements, thus ensuring in every way to meet completion targets.

Western Rollout Contracting Est. is a 100 % Saudi owned company.



AREA OF INTEREST



MAJOR PROJECTS

1

- Utilities Infrastructure (Telecom, Power, Water)

2

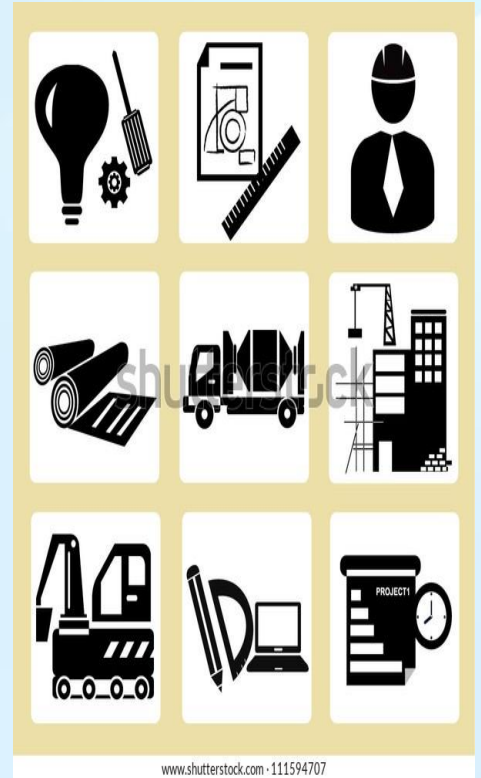
- Constructions

3

- HDD (Horizontal Directional Drilling)

4

- Road Infrastructure Projects under MOT and Municipality



Utilities Infrastructure Power and Telecom Project

OSP - (Out Side Plant)

- Design and Engineering of Telecommunication, Water, Power infrastructure
- Civil Constructions
- Utility Identification
- Leveling lands
- Rock Trenching / Rock Breaking / Relocation
- FOC Outside Plant Installation & Construction
- FOC Splicing and Testing



Utilities Infrastructure Power and Telecom Project

OSP - (Out Side Plant) – Equipment's & Resources

- **Mole Plough Machine – KOMATSO D155A** - Used to break up ground below plough depth to pull pipes or buried cables with detectable warning tape. Usually with a straight blade the shank and a tapered circular point at the base slightly bigger than the diameter of pipe/cable being installed.



- **Mole Plough Machine** - It is a highly versatile machine flexible enough to be used in the sensitive project for installing the cable/ducts without excavation on the top of water pipe line and OIL & Gas Pipe line

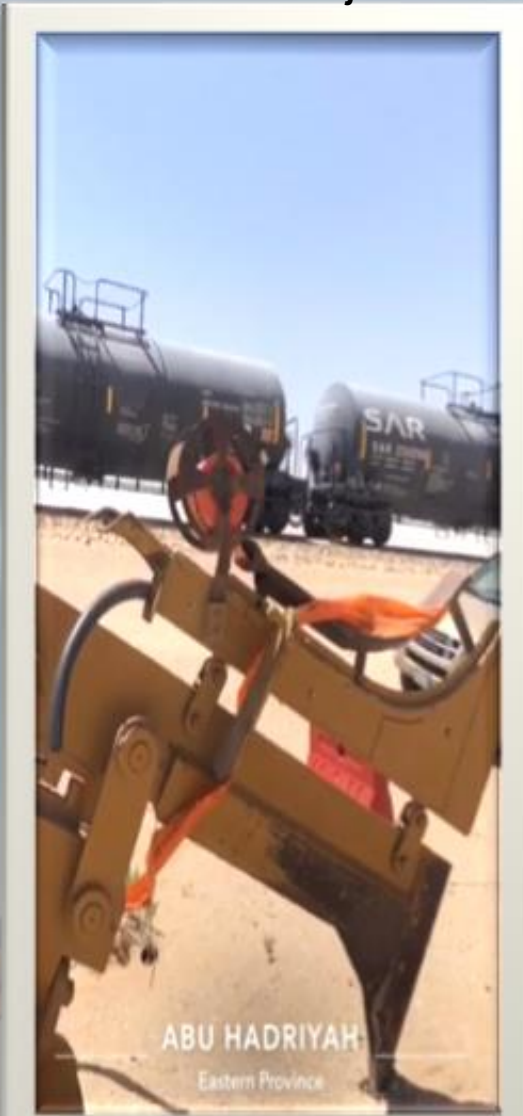


Utilities Infrastructure Power and Telecom Project

OSP - (Out Side Plant) – Field Work



SAR Project



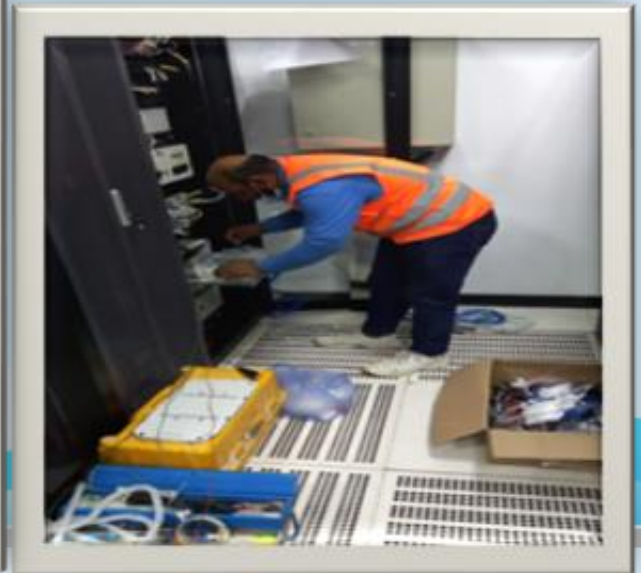
Safety preparation



Micro trench & Milling and paving



Technical Team in data Center



Water Pipeline installation



- Specialised trenching machines and excavators are used to dig the trench.
- Skilled team with proper tools to implement the water pipeline project



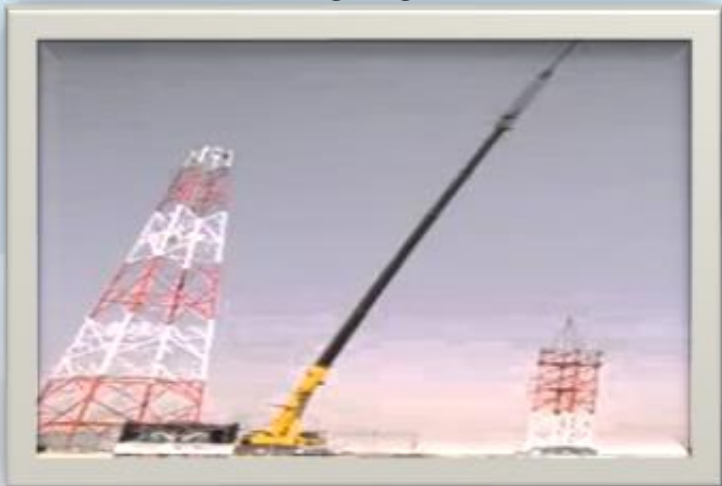
warehouse Project



Fence



Tower



parking shade



HDD Project

Directional Drilling Commonly called horizontal directional drilling or HDD, is a trenchless method of installing underground pipes, conduits and cables in a shallow arc along a prescribed bore path by using a surface-launched drilling rig, with minimal impact on the surrounding area. Directional boring is used when trenching or excavating is not practical. It is suitable for a variety of soil conditions and jobs including road, landscape and river crossings. Installation lengths up to 200 m , and diameters up to 1200 mm. Pipes can be made of materials such as PVC, polyethylene, polypropylene, Ductile iron, and steel if the pipes can be pulled through the drilled hole. Directional boring is not practical if there are voids in the rock or incomplete layers of rock. The best material is solid rock or sedimentary material. Soils with cobble stone are not recommended. There are different types of heads used in the pilot-hole process, and they depend on the geological material.



Municipality Project

Rock breaking and land leveling



MOT Project

Road leveling and materials loading

- Road leveling by Grader
- grounding Compaction



- Loaders are used mainly for loading materials into trucks, backfilling, clearing rubble



Major ISP Project

ISP - (In Side Plant) Technical

Fiber Optic Solution



Cable Blowing & Pulling



Fire Alarm



CCTV



Network



Electric Project



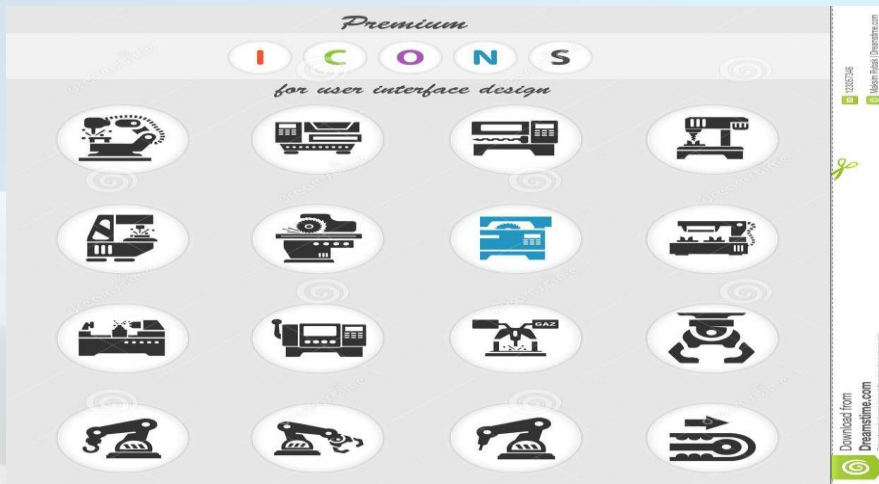
List Of Equipment's

S.No	Machine	QTY
1	Excavator Machine (poclain)	20
2	Dozer D9R & D8R	4 & 2
3	Loader	2
4	Grader	1
5	HDD Machine (60 & 30)	2
6	Truck 30 tune	10
7	Boom truck	1



List Of Tools

S.No	Tools	QTY
1	FUJIKURA FOC Splice Machine	3
2	OTDR-EXFO-FTB-100	2
3	Live Fiber Detector	1
4	Corning Tool	2
5	PON Power Meter	2
6	VFL	3
7	Fluke Tester	1



Our Clients:



مجموعة العطير للمقاولات
Al-Otair Group For Contracting



أمانة
منطقة
الجوف

STC
الاتصالات السعودية



موبايلي
mobily



سلام
salam



الشركة السعودية للكهرباء
Saudi Electricity Company



وزارة الشؤون
البلدية و القروية
Ministry of Municipal & Rural Affairs



وزارة النقل
TRANSPORT MINISTRY

SAR
الخطوط الحديدية السعودية
SAUDI ARABIA RAILWAYS



Executed & Ongoing Projects

S.No.	Project	Location	3rd Party	Contractor	Status
1	CRW-230	Hassan	PO	Project Technology	Closed
2	CRW-229	Um-Al Araad	PO	Project Technology	Closed
4	CRW-367	AL LITH	SAPAC	Raed Al Nagah	Closed
5	CRW-242 METRO	AL LITH	MOT	Saudi Delta	Closed
6	CRW-404 SNFN	AL LITH	MOT	Saudi Delta	Closed
7	CRW-354	AMEER FAWAZ	SAPAC	Met	Closed
8	CRW-296	KAUST	ICC	Raed Al Nagah	Closed
9	CRW-273	KAUST	ICC	Raed Al Nagah	Closed
10	CRW-197B	Briman	MOT	SDC	Closed
11	GSM-2132-Ex MH24	Balad	SDC	SDC	Closed
12	NAYEEM-FDT-02	Nayeem	Mobily	Netw ork-5	Closed
13	AZYA-Feeder Cable	AZYA	Mobily	CCS	Closed
14	Makkah MOI - CCTV	Makkah	MOI	MASAD ALMOTAIRY	Closed
15	AZYA FEEDER	Jeddah	Mobily	CCS	Closed
16	SHRF FEEDER	Jeddah	Mobily	CCS	Closed
17	JMYA FEEDER	Jeddah	Mobily	CCS	Closed
18	JMYA FEEDER	Jeddah	Mobily	CCS	Closed
19	MRWA FEEDER	Jeddah	Mobily	CCS	Closed
20	FYSL FEEDER	Jeddah	Mobily	CCS	Closed
21	NUZH - STC	Jeddah	Mobily	CCS	Closed
22	NUZH-FDT-03- Taif	Taif	Mobily	CCS	Closed
23	MH06-MH17 - Taif	Taif	Mobily	CCS	Closed
24	QRY0604	QURRAYAT	SALAM	MAWARID	Ongoing



CHALLENGES

OUR CHALLENGES

Today we face three challenges:

Sustainability and efficiency need to be integrated into every project from the very beginning until the end of the lifecycle.

Construction projects must be delivered on time and on budget.

Compliance with local regulations must be assimilated to ensure project success.





وزارة التجارة
Ministry of Commerce

شهادة تسجيل مؤسفة فردية

الرقم: ١١١٨٠٠٣٨٣٨

التاريخ: ١٤٣٥/١٢/٢١ هـ

الرقم الموحد للمنشأة: ٧٠٠٥٢٩٧٤٨١

الإسم التجاري للمؤسسة: مؤسسة تمديدات الغربية للمقاولات

مركزها الرئيسي: عفيف كيلو ٥ الشارع العام

ص.ب: _____ الرمز البريدي: _____ هاتف: _____

اسم التاجر: زكية مناع علي المطيري الجنسية: سعودي تاريخ الميلاد: ١٣٩٨ هـ

رقم السجل المدني - الإقامة: ١٠٣٢٧٥٧٨٦٤ تاريخه: ١٤١٧/٠٣/١٥ هـ مصدره: المهدي

رقم الحفيظة - الجواز: ٢٧٧٥٨٢ تاريخه: ١٤١٧/٠٣/١٥ هـ مصدره: المهدي

النشاط: نشاط على بيئات الأنشطة الرجاء مسح الرمز التجاري

رأس المال: ٢٥٠٠٠ خمسة وعشرون ألف ريال فقط لا غير

اسم المدير أو الوكيل المفوض: زكية مناع علي المطيري

الجنسية: سعودي تاريخ الميلاد: ١٣٩٨ هـ

رقم السجل المدني - الإقامة: ١٠٣٢٧٥٧٨٦٤ تاريخه: ١٤١٧/٠٣/١٥ هـ مصدره: المهدي

سلطات المدير

يشهد مكتب السجل التجاري بمدينة عفيف بأنه تم تسجيل هذه المؤسسة بسجل مدينة عفيف

وتنتهي صلاحية الشهادة في ١٤٤٣/١١/١١ هـ بموجب الإيصال رقم: ٦٤٩٢٠٨٤ و تاريخ: ١٤٤٢/١١/٠٧ هـ

مدير السجل التجاري: نايف صالح الطاسان

التوقيع:





Address & Contact

Company Name: Western Rollout Contracting Est.

Name: Engr. Sattam Al Oqaili

Position: GM

Address: Riyadh (HQ) & Jeddah

Cell No.: +966564444538

Email: Sattam@tamdidat.com

